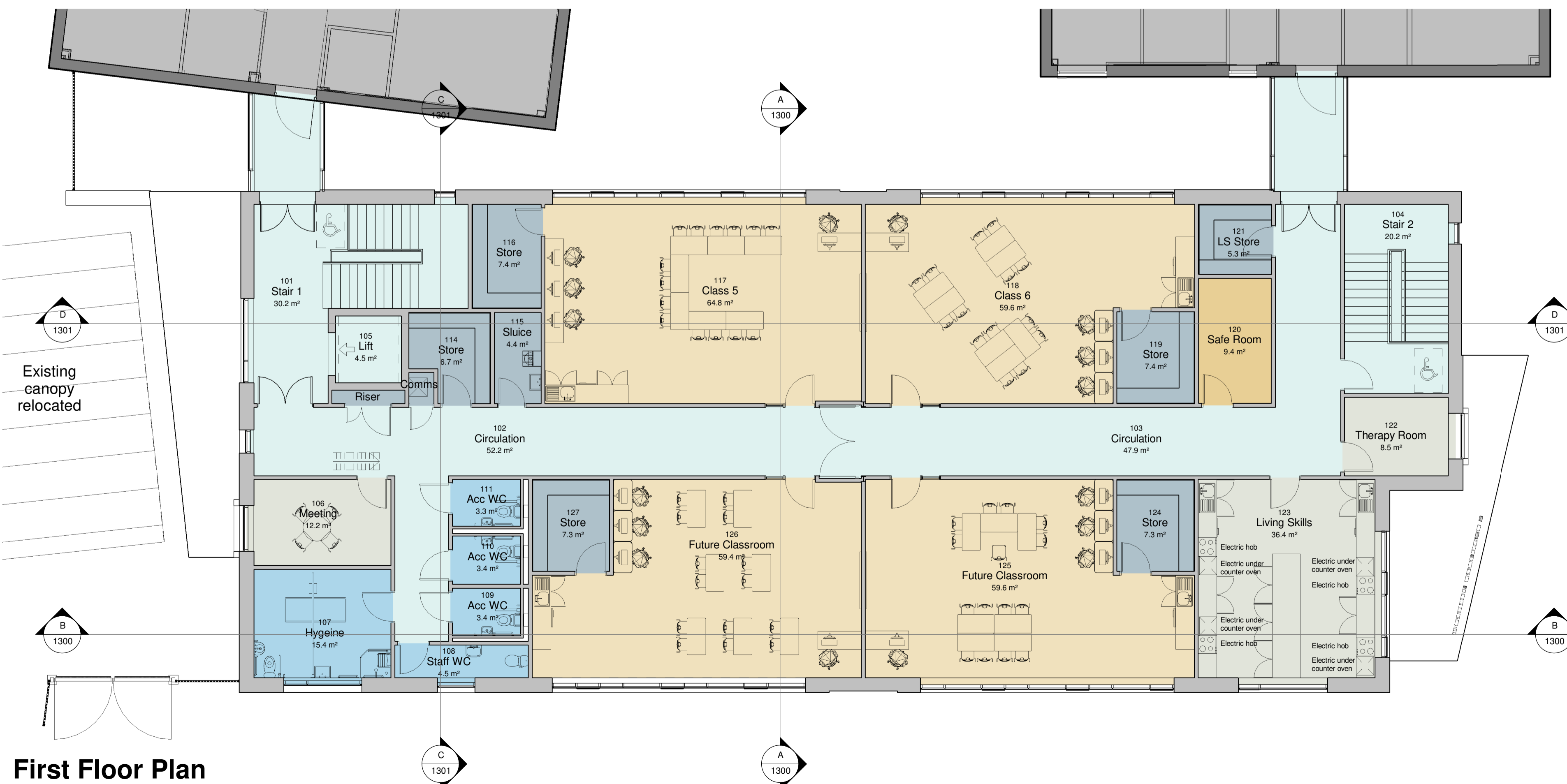


Department Key:

- Existing Building
- Circulation
- Classrooms
- Store
- Support
- Teaching
- Toilets

© BOWKER SADLER PARTNERSHIP LIMITED
 ■ THIS DRAWING IS THE SUBJECT OF COPYRIGHT WHICH VESTS IN BOWKER SADLER PARTNERSHIP LIMITED. IT IS AN INFRINGEMENT OF COPYRIGHT TO REPRODUCE THIS DRAWING BY WHATEVER MEANS, INCLUDING ELECTRONIC, WITHOUT THE EXPRESS WRITTEN CONSENT OF BOWKER SADLER PARTNERSHIP LIMITED WHICH RESERVES ALL ITS RIGHTS.
 BOWKER SADLER PARTNERSHIP LIMITED ASSERTS ITS RIGHTS TO BE IDENTIFIED AS THE AUTHOR OF THIS DESIGN.
 ■ DRAWING NOT TO BE SCALED.
 ■ REPORT ERRORS & OMISSIONS TO ARCHITECT.
 ■ CHECK ALL DIMENSIONS ON SITE.
 ■ DRAWING TO BE READ IN CONJUNCTION WITH THE HEALTH AND SAFETY PLAN AND ALL RELEVANT RISK ASSESSMENTS

Ground Floor Plan
 1 : 100



First Floor Plan
 1 : 100

REV.	DATE	DRN.	CHKD.
C	02/11/21	AT	Safe rm and store amended on GF & staff rooms now meeting rooms
B	15/10/21	AT	Plans updated to end user comments and furniture shown
A	07/10/21	AT	Plan revised following school and design team comments

PROJECT

Gorton Education Village

CLIENT
 Bright Futures Educational Trust

DRAWING
 Proposed Floor Plans - MHS

SCALE	SHEET SIZE	DRAWN	CHECKED	DATE
1 : 100	@ A1	AH	CS	29.07.20

BOWKER SADLER ARCHITECTURE
 A: Hatherlow House, Hatherlow, Romiley, Stockport SK6 3DY
 T: 0161 406 7333
 E: office@bowker-sadler.co.uk
 W: www.bowker-sadler.co.uk

JOB No	DRAWING No	REVISION
20-030	1101	C
STATUS	PLANNING	

